

# house beautiful

Magical

AUGUST 1995 \$2.95

## MAKEOVERS

Once a boarded-up wreck,  
now a charming beach house  
Once a tiny farmhouse kitchen,  
now an expansive garden room  
Once a crumbling monastery,  
now a welcoming country home

Th  
ns

Ear  
from the Farmers' Market



# The sum of its parts

Three small elements add up to a California woodland retreat that has everything a couple and their guests need

Painted the color of the Pacific madrone trees, the weekend retreat slips between the tall trunks. **RIGHT, TOP TO BOTTOM:** Garage-type doors roll up to reveal the roofless courtyard. Each morning the Kelleys turn on the fountain before having breakfast. The main house is raised above a garage, and a bridge connects it to a spa in its own small tower.

BY SUSAN ZEYON  
PHOTOGRAPHY BY JEREMY SAMUELSON  
PRODUCED BY SUSAN ZEYON AND JODY THOMPSON-KENNEDY

Would you drive eight hours to a weekend retreat? Donna and Michael Kelley do it happily, finding the time spent at their new house in the Napa Valley well worth the long drive from Laguna Beach. "We asked our architects for a place that would fit right into the forest yet have the romantic character of an old-world farm," Donna Kelley says. Corrugated metal and stucco were the materials chosen by Batter Kay Associates, the Del Mar-based firm that had already designed the couple's main residence.

The architects, inspired by the simple old wine storage sheds that dot the landscape, gave the couple





Corrugated steel walls (TOP) add light and texture to the living room. ABOVE LEFT: Pottery Barn chairs attend an 1870 Mexican dining table made of barn siding. ABOVE RIGHT: Although small, the tall kitchen with generous windows feels expansive. OPPOSITE: A double-height wall of shelves marches up the staircase to the master bedroom.

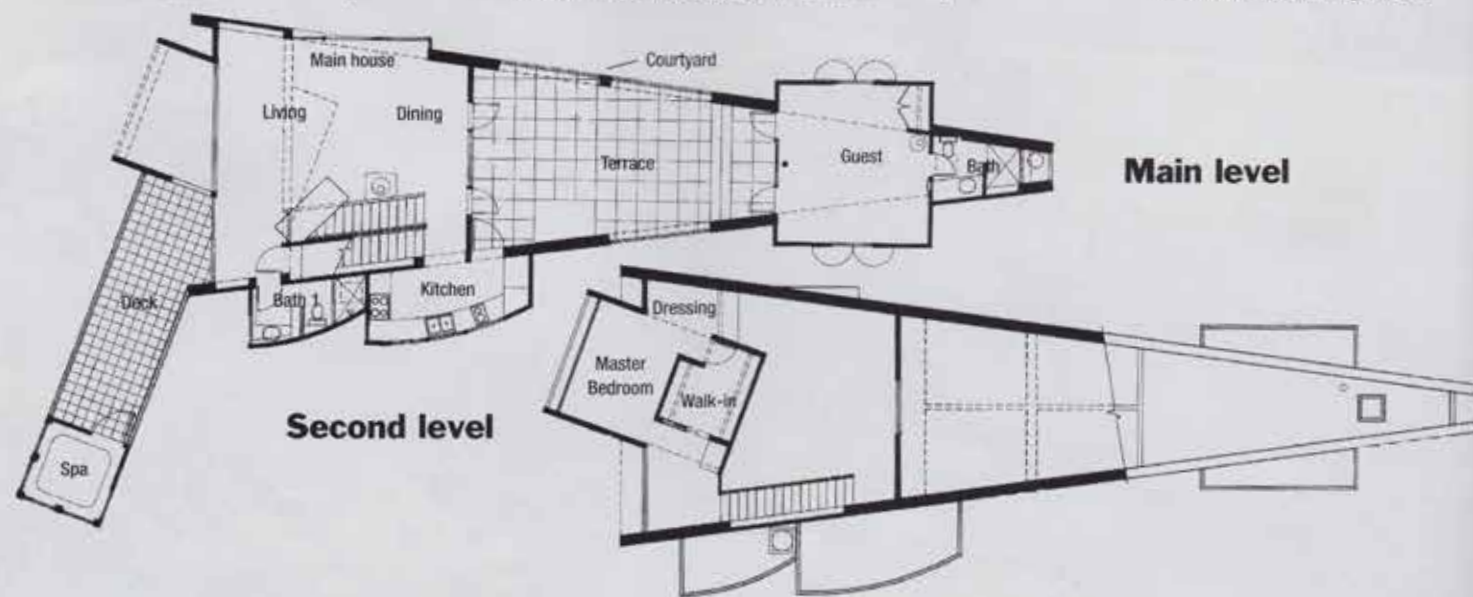


a house of three small parts that measure a total of 1,500 square feet. A small two-story main building contains a single room for living and dining adjacent to a kitchen that serves two hobbyist cooks very well. Upstairs, the bedroom has a space-enhancing wall of windows, and Donna says, "During the day it is open to the treetops but at night we focus upward and it's like sleeping under the stars." Guest quarters, even smaller, are in another structure across the courtyard. A red-railed bridge that doubles as a deck leads from the main house to the spa, where the couple like to enjoy a glass of port after dinner followed by a soak in the tub.

"We love the way the house enables us to move from inside to outside as though the spaces were one," Michael Kelley says. He enjoys the weekends so much he has compressed his weekly work schedule as a psychologist into three days.



Comfort in a nutshell, THIS PAGE, CLOCKWISE FROM TOP: Chaise on the main-house stair landing is a cozy spot for reading; walk-in clothes closet is nearby. The spa in the end building has a skylight. Donna Kelley enjoys a cup of coffee on the deck outside the spa. Master bedroom contains only an iron bed, night tables, windows. OPPOSITE: The courtyard extends the living room and guest room to the outdoors, California-style, and sometimes serves as a potting shed.



For more details, see Reader Information

